

Every Critical Application Needs a
Reliable Backup Partner



ALPHA POWER CONTROLS

2/439, Thirumal Nagar, Athur Privi,
Erode Road, Karur - 639 002.

alphapowercontrols.in@gmail.com

www.alphapowercontrols.in

ON LINE UPS

UNINTERRUPTIBLE POWER SUPPLY

Robust Transformer-based UPS Series



ON LINE UPS

HF SERIES 1~3KVA (1Φ - 1Φ)



- High frequency and double conversion online technology
- Fully digitized microprocessor control
- Wide Input voltage range
- LCD Display
- IGBT both Inverter & Rectifier stage
- Short circuit & overload protection
- High reliability digital control

GP SERIES 5~12KVA (1Φ - 1Φ)



- High reliability design
- Strong protection for load
- Wide input range (165 ~ 275 VAC)
- Optimization of high-performance battery
- Battery cold start function
- User-friendly network management
- Comprehensive and reliable protection

XP SERIES HF XP 6~10 KVA (1-1)



- True double-conversion
- Customized power factor
- Wide input voltage (110 V – 300V)
- Converter mode available
- ECO mode for energy saving (Only available for 1-3KVA)
- Generator compatible
- Adjustable battery number only available for 11K and up models
- Smart SNMP works well with either USB or RS-232 together

MASTER SERIES 10~30KVA (3Φ - 1Φ)



- High reliability design
- Strong protection for load
- Wide input range (304 ~ 456 VAC)
- Optimization of high-performance battery
- Battery cold start function
- User-friendly network management
- Comprehensive and reliable protection

YDC SERIES 10~30 KVA (3-3)



- High power density design
- N+X parallel redundancy, support maximum 4 unit in parallel
- Online double conversion with DSP control
- Input current harmonic <3%
- Wide input voltage range: 208~478Vac
- Wide input frequency range 40~70HZ
- Optimization battery group, the quantity of battery 10~30kVA: 16/18/20pcs (30~50pcs is optional) 40kVA: 30~50pcs

EPOWER-L SERIES 10~160 KVA 0.8 PF



- Online double conversion
- N+X parallel redundancy
- Wide input adaptability
- Optimized battery management
- Full DSP control
- Power walk in
- LBS synchronization
- Multi-protection
- User-friendly network management

SERVO / STATIC STABILIZER 10~1000 KVA



- High Efficiency and Fast response
- Wide input voltage range and Audible alarm for trip conditions.
- 99.99% failure proof control circuit
- Built in bypass switch upto 100 KVA
- No Effect of power factor and frequency variations
- Single PCB for three phase sensing and correction
- Rugged and smooth ac motor drive control through optoisolator circuit
- Separate isolated PCB for triac switching

EPOWER SERIES 10~800 KVA 0.9 PF



- Online double conversion
- Full DSP control
- High power factor (I/P - 0.98 ; O/P - 0.9)
- Wide input adaptability (380 / 400 / 415) (-25% / + 20%)
- Multi-protection
- Strong overload capability
- EPO function
- Optimized battery management
- N + X parallel redundancy

ALPHA POWER CONTROLS

No.2/439, Thirumal Nagar, Athur Privu, Erode Road, Karur - 639 002

E-mail : alphapowercontrols.in@gmail.com

Website : www.alphapowercontrols.in

Branches: Chennai | Coimbatore | Madurai | Trichy | Karur | Erode | Salem | Hosur | Tiruppur

Scan the QR Code to Visit our Website



Every Critical Application Needs
a Reliable Backup Partner

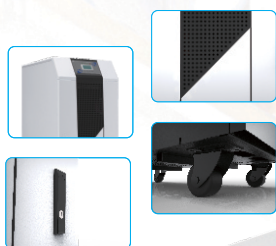


ALPHA POWER CONTROLS

EPOWER SERIES

10-120kVA

3:3 phase



Features

■ Online double conversion

- Online Double Conversion design helps to output a pure sine wave, which is immune from the UPS input, so that the load can run steadily.
- UPS transfers among different working mode without output interruption, thereby powering the load uninterruptedly.

■ Full DSP control

- Full DSP Control avoids the risks caused by analog devices failure and makes the control system more stable and reliable.

■ High power factor

- The output power factor up to 0.9 better matches the load.
- The input power factor 0.98 with filter helps to improve the efficiency, reduce the harmonic pollution to the Grid and lower the UPS running cost.

■ Wide input adaptability

- The range of AC input voltage is (380V_a/400V_a/415V_a) (-25%/+20%), minimizing transfer to battery mode, thereby greatly prolonging the battery life.
- Wide input frequency ranging from 45Hz to 65Hz, ensures stability of UPS while generator connected.

■ Optimized battery management

- Intelligent battery management system and advanced battery auto float/boost charge technology, reduces the frequency of battery maintenance, greatly improves the battery efficiency and extends battery life.
- Battery discharge time prediction: the system will display the backup time of battery calculated by discharge current and voltage.
- Battery self-test: battery is automatically tested at regular intervals
- Flexible battery configuration ranging from 360~408Vdc / 480Vdc.

■ N+X parallel redundancy

- N+X parallel redundant design, up to 6 units available, makes the configuration more flexible.
- Any unit in parallel system fails, the faulty one will automatically cut off the output, and the load will be powered by the remained units.

- It is easy to configure the parallel system just by connecting the parallel cables and doing proper settings.

- Non-fixed Master-Slave relationship: Among several UPS in parallel, the unit startup first is Master UPS, the others are Slave. The master and slave may be exchanged.

■ Strong overload capability

- 110% / 125% / 150% overload for 60min / 10min / 1min.

■ Power walk in

- Specially designed power walk in function, in which rectifier of each unit in parallel system will be turned on in sequence at intervals to avoid the sudden load on the generator, thereby reducing the cost of the generator required.

■ Generator mode

- Set the maximum output power of the generator when a smaller one than needed is employed to extend the battery duration time. In this case, the load is supplied by both the generator and battery.

■ Cold Start

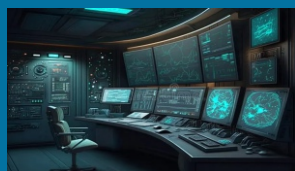
- Battery start-up without AC input, for commissioning and emergency application.

■ LBS synchronization

- Synchronize the output of the two independent UPS systems (single unit or parallel) even when the two systems are operating on different modes (bypass/inverter) or on battery.

■ Multi-protection

- Self-diagnosis function will take place before start-up for safety.
- Multi-protection: AC input under/over voltage, overload, short-circuit, over-current, over bus voltage, over-temperature, fan failure, auxiliary power failure, battery under voltage, battery over-charge and so on.



■ EPO function

· A concave red EPO button with transparent cover is embodied in the LCD control panel for emergency power off.

■ User-friendly network management

· Chinese/English LCD and LED mimic diagram: real time operation parameters and status

· RS232 & RS485 communication ports: for local monitor with corresponding software, and MODBUS protocol is optional.

· SNMP adapter (optional): for remote monitor through network

· Dry contacts for additional monitoring:

- | | |
|------------------------------|------------------------|
| a) UPS on Inverter | f) UPS alarm |
| b) Mains input failure | g) UPS on battery |
| c) remote EPO | h) UPS on bypass |
| d) Battery low voltage alarm | Note: d) --h) optional |
| e) UPS fault | |



Technical Specifications:

MODEL	EP10-L	EP20-L	EP30-L	EP40-L	EP60-L	EP80-L	EP100-L	EP120-L
Capacity (VA/Watts)	10kVA/8kW	20kVA/16kW	30kVA/24kW	40kVA/32kW	60kVA/48kW	80kVA/64kW	100kVA/80kW	120kVA/96kW
INPUT								
Operating voltage range	380/400/415Vac (~25% / +20%), (3Ph+N+PE)							
Operating frequency range	50/60Hz (± 5Hz)							
Power factor	≥0.94,with filter							
OUTPUT								
Output voltage	380/400/415Vac (±0.5%)							
Output frequency	50/60Hz (± 0.05%)							
Harmonic distortion (THD)	<1.5% (linear load)							
Crest factor	3:1 (Max.)							
Efficiency	≥91%				≥92%			
BYPASS								
Rated voltage	380/400/415Vac							
Rated frequency	50/60Hz							
Voltage protection range	Upper limit: +20% (+10%,+15%,+20% adjustable) Lower limit: -40% (-10%, -20%, -30%, -40% adjustable)							
Frequency protection range	± 10% (± 2.5%, ± 5%, ± 10%, ± 20% adjustable)							
BATTERY								
Battery voltage	384Vdc(default 32, 30-32,settable)						384Vdc(default 32, 30-34,settable)	
SYSTEM FEATURES								
Transfer time	0ms (Line mode ↔Battery mode)							
Overload	110%/60min ,125%/10min ,150%/1min							
LED display	Input, Inverter, Bypass, Battery, Output, Status							
LCD display	I/O voltage, power factor, battery voltage, current, battery status, load percentage, UPS status, history record							
Communication interface	Dry contact, RS232, RS485, SNMP card (Optional)							
Optional	Harmonic filter, SNMP adapter, LBS cables, battery temperature sensor, Bypass current-sharing inductor							
ENVIRONMENTAL								
Operating temperature	0 ~ 40℃							
Storage temperature	-25℃ ~ 55℃							
Humidity range	0 ~ 95% (non-condensing)							
Altitude	<1500m							
Noise level	<58dB				<62dB			
PHYSICAL								
Dimension W×D×H (mm)	430*830*1100				720*690*1400		880*760*1600	
Net weight (kg)	210	225	240	255	390	430	650	690
STANDARDS								
Safety	IEC/EN62040-1;IEC/EN60950-1							
EMC	IEC/EN62040-2;IEC61000-4-2;IEC61000-4-3;IEC61000-4-4; IEC61000-4-5;IEC61000-4-6;IEC61000-4-8							

Specifications are subject to change without prior notice.

ALPHA POWER CONTROLS

No.2/439, Thirumal Nagar, Athur Privu, Erode Road, Karur - 639 002

E-mail : alphapowercontrols.in@gmail.com

Website : www.alphapowercontrols.in

Branches: Chennai | Coimbatore | Madurai | Trichy | Karur | Erode | Salem | Hosur | Tiruppur

Scan the QR Code
to Visit our Website



Every Critical Application Needs a Reliable Backup Partner

ON-LINE UPS



ALPHA POWER CONTROLS

- # 2/439, Thirumal Nagar, Athur Privi, Erode Road, Karur - 639 002.
- alhapowercontrols.in@gmail.com
- www.alhapowercontrols.in

EPOWER-L SERIES



10~160kVA
3:3 phase PF: 0.8

Online double conversion

- Online Double Conversion design helps to output a pure sine wave, which is immune from the UPS input, so that the load can run steadily
- UPS transfers among different working mode without output interruption, thereby powering the load uninterruptedly

Wide input adaptability

- The range of AC input voltage is (380/400/415Vac) (-25%/+20%), minimizing transfer to battery mode, thereby greatly prolonging the battery life
- Wide input frequency ranging from 45Hz to 65Hz, ensures stability of UPS while generator connected

Optimized battery management

- Intelligent battery management system and advanced battery auto float/boost charge technology, reduces the frequency of battery maintenance, greatly improves the battery efficiency and extends battery life
- Battery self-test: Battery is automatically tested at regular intervals
- Flexible battery configuration ranging from 360-384Vdc

Generator mode

- Set the maximum output power of the generator when a smaller one than needed is employed to extend the battery duration time. In this case, the load is supplied by both the generator and battery

N+X parallel redundancy

- N+X parallel redundant design, up to 6 units available, makes the configuration more flexible
- Any unit in parallel system fails, the faulty one will automatically cut off the output, and the load will be powered by the remained units
- It is easy to configure the parallel system just by connecting the parallel cables and doing proper settings
- Non-fixed Master-Slave relationship: Among several UPS in parallel, the unit startup first is Master UPS, the others are Slave. The master and slave may be exchanged

Full DSP control

- Double DSP control makes the whole system more stable and reliable

Power walk in

- Specially designed power walk in function, in which rectifier of each unit in parallel system will be turned on in sequence at intervals to avoid the sudden load on the generator, thereby reducing the cost of the generator required

- Multi-protection: AC input under/over voltage, overload, short-circuit, over-current, over bus voltage, over-temperature, fan failure, auxiliary power failure, battery under voltage, battery over-charge and so on

Technical Specifications :

ALPHA POWER CONTROLS



LBS synchronization

- Synchronize the output of the two independent UPS systems (Single unit or parallel) even when the two systems are operating on different modes (Bypass/Inverter) or on battery

Multi-protection

- Self-diagnosis function will take place before start-up for safety

User-friendly network management

- Chinese/English LCD and LED mimic diagram: real time operation parameters and status (7 inch touch screen optional)
- RS232 & RS485 communication ports: For local monitor with corresponding software, both can support MODBUS protocol
- SNMP adapter (Optional): For remote monitor through network
- Dry contacts (Optional): For additional monitoring

Technical Specifications:

MODEL	EP10-L	EP20-L	EP30-L	EP40-L	EP60-L	EP80-L	EP100-L	EP120-L	EP160-L
Capacity	10kVA/8kW	20kVA/16kW	30kVA/24kW	40kVA/32kW	60kVA/48kW	80kVA/64kW	100kVA/80kW	120kVA/96kW	160kVA/128kW

INPUT

Operating voltage range	380/400/415Vac (−25%/+20%), (3Ph+PE)								
Operating frequency range	50/60Hz (±5%)								
Power factor	≥0.97 *								

OUTPUT

Output voltage	380/400/415Vac (±1%), (3Ph+N+PE)								
Output frequency	50/60Hz (±0.05%)								
Harmonic distortion (THDv)	≤2% (Linear load)								
Crest factor	3:1 (Max)								
Efficiency	88%	89%		90%		90.5%	92%		92.5%

BYPASS

Rated voltage	380/400/415Vac, (3Ph+N+PE)								
Rated frequency	50/60Hz								
Voltage protection range	Upper limit: +20% (+10%, +15%, +20% adjustable) Lower limit: −40% (−10%, −20%, −30%, −40% adjustable)								
Frequency protection range	±10% (±2.5%, ±5%, ±10%, ±20% adjustable)								

BATTERY

Battery voltage	384Vdc (360~384Vdc)								
-----------------	---------------------	--	--	--	--	--	--	--	--

SYSTEM FEATURES

Transfer time	0 ms (Line mode → Battery mode)								
Overload	Load ≤110%/60min; ≤125%/10mins; ≤150%/1 min, to Bypass								
LED display	Input, Inverter, Bypass, Battery, Output, Status								
LCD display	I / O voltage, frequency, power, power factor, battery voltage, current, battery status, load percentage, UPS status, history record, settings								
Communication interface	RS232, RS485, EPO, Dry contact (Optional), SNMP card (Optional)								
Optional	Harmonic filter, SNMP adapter, LBS cables, battery temperature sensor, Bypass current-sharing inductor								

ENVIRONMENTAL

Operating temperature	0~40°C								
Storage temperature	−25~55°C								
Humidity range	0~95% (Non-condensing)								
Altitude	<1500m								
Noise level	<58dB				<68dB				

PHYSICAL

Dimension W×D×H (mm)	350×650×1050			430×830×1100		720×690×1400		890×790×1600	
Net weight (kg)	145	155	190	242	315	365	420	635	740
Shipping weight (kg)	160	170	215	267	340	400	455	680	785

STANDARDS

Safety	IEC/EN 62040-1; IEC 62477-1								
EMC	IEC/EN 62040-2 (IEC 61000-4-2, IEC 61000-4-3, IEC 61000-4-4, IEC 61000-4-5, IEC 61000-4-6, IEC 61000-4-8, IEC 61000-4-11, IEC 61000-2-2)								
Performance	IEC/EN 62040-3								

* With optional filter.

All parameters are measured under the condition of laboratory.

Specifications are subject to change without prior notice.

Scan the QR Code
to Visit our Website



ALPHA POWER CONTROLS

No.2/439, Thirumal Nagar, Athur Privu, Erode Road, Karur - 639 002

E-mail : alphapowercontrols.in@gmail.com

Website : www.alphapowercontrols.in

Branches: Chennai | Coimbatore | Madurai | Trichy | Karur | Erode | Salem | Hosur | Tiruppur

Every Critical Application Needs a Reliable Backup Partner

ON-LINE UPS



ALPHA POWER CONTROLS

- # 2/439, Thirumal Nagar, Athur Priviu, Erode Road, Karur - 639 002.
- alphapowercontrols.in@gmail.com
- www.alphapowercontrols.in

GP SERIES

6 ~ 10KVA
1:1 Phase PF : 0.8



ON LINE
OUTPUT: 231 V

► CONTROL PANEL



Features

High reliability design

- Double Conversion on-line design, which make the output a pure sine wave source with tracking frequency, phase-lock and voltage regulation, low distortion and without power fluctuation interference, providing the load with more comprehensive protection.

Strong protection for load

- Built-in isolation transformer, strong anti-interference ability, provides more comprehensive protection.
- Built-in static electronic bypass switch, when UPS fails, it can transfer to bypass mode and continue to provide power for load by AC.

Wide input range

- Wide input voltage range up to " 165~275VAC, avoid frequently switching to battery mode, which adapt to the areas with harsh environment.
- Wide input frequency range, ensure all types of fuel generators connected work stable.

Optimization of high-performance battery

- Advanced floating switching and charging technology maximums the activation of the battery, thus saves the charging time and extends the battery life.

Battery cold start function

- The UPS can be start directly by battery group when no utility access in, which meets the emergent needs of user.
- Strong cold start ability, which can do the cold start operation when full load.

User-friendly network management

- Communication with computer can be realized by RS232 with corresponding monitoring software. The various parameters can be shown on the communication interface.
- External SNMP adapter. The UPS with remote network management capability can provide real-time data for communication and management through a variety of network management systems.

Comprehensive and reliable protection

- Self-diagnosis function before start-up, avoid the risks that the failure may lead to.
- The multi-protection such as overload, short-circuit, over-temperature, battery under voltage, battery over-charge and so on greatly ensure the system stability and reliability.

► REAR PANEL



Technical Specifications :

ALPHA POWER CONTROLS



	GP06	GP10
Capacity (KVA / KW)	6 / 4.8	10 / 8
Nominal voltage	220/230Vac	
Operating voltage range	165 ~ 275Vac	
Operating frequency range	50/60Hz (±5%)	
Power factor	>0.97 (with filter)	
Output voltage	220Vac(±0.5%) / 230Vac(±0.5%)	
Output frequency	50/60Hz(±0.5%)	
Crest factor	3:1 (max)	
Efficiency	> 92% online	
Harmonic distortion (THD)	<1.5% (Linear Load)	
Power Factor	0.8 (0.9 Optional)	
Battery Voltage	192 VDC	
Battery Types	SMF VRLA / TUBULAR	
Transfer Time	0 ms (Line mode ↔ Battery mode)	
Overload	>125% : 1min, <150%: 200ms	
Communication interface	RS, SNMP (optional), Dry contact (optional)	
Operating temperature	0 ~ 40°C	
Storage temperature	-25°C ~ 55°C	
Humidity range	0 ~ 95% (non-condensing)	
Altitude	<1500m	
Noise level	<55dB	
Dimension W x D x H (mm)	230 x 580 x 720	305 x 585 x 864
Net weight (kg)	63	82
Safety	IEC/EN62040-1;ENC/EN62400-1	
EMC	IEC/EN62040-2;IEC61000-4-2;IEC61000-4-3;IEC61000-4-4; IEC61000-4-5;IEC61000-4-6;IEC61000-4-8	

ALPHA POWER CONTROLS

No.2/439, Thirumal Nagar, Athur Privu, Erode Road, Karur - 639 002

E-mail : alphapowercontrols.in@gmail.com

Website : www.alphapowercontrols.in

Branches: Chennai | Coimbatore | Madurai | Trichy | Karur | Erode | Salem | Hosur | Tiruppur

Scan the QR Code
to Visit our Website



Every Critical Application Needs a
Reliable Backup Partner

ON-LINE UPS



ALPHA POWER CONTROLS

2/439, Thirumal Nagar, Athur Privi,
Erode Road, Karur - 639 002.
alphapowercontrols.in@gmail.com
www.alphapowercontrols.in



HF SERIES

1~3KVA



► CONTROL PANEL

Features

- High frequency and double conversion online technology
- Fully digitized microprocessor control
- Wide Input voltage range
- Highly Efficient up to 91%
- High input power factor 0.99
- LCD Display
- Cold Start
- IGBT both Inverter & Rectifier stage
- Advanced battery charge in UPS OFF mode
- Short circuit & overload protection
- EMI/RFI noise filter
- Smart RS232 communication with monitoring software
- Optional SNMP card slot
- High reliability digital control
- Full protection function

Application :

Server and Other Networking Equipments

Digital printers

Medical equipments

Laboratory equipments

► REAR PANEL





Technical Specifications :

MODEL	HF1101L3	HF1101B3	HF1102L8	HF1102B8	HF1103L8	HF1103B8
Capacity (VA)	1000		2000		3000	
INPUT						
Nominal Voltage	220 / 230 / 240VAC					
Operating Voltage Range	110-300 VAC (Based on load at 50%), 160-280VAC (based om load at 100%)					
Operating Frequency Range	46~54Hz±0.5Hz or 56~64Hz±0.5Hz (auto sensing)					
Power Factor	>0.99					
OUTPUT						
Output Voltage / Power Factor	220 / 230 / 240VAC±1% / 0.9 Std.					
Output Frequency	Synchronized with the utility on AC mode; 50Hz/60Hz0.2% on Battery mode					
Harmonic distortion (THDv)	<2% (Linear load), <5% (Non Linear Load)					
Crest Factor	3:1 (max)					
Efficiency	>91%					
BATTERY						
DC Voltage	36Vdc		96Vdc			
Battery Type & Number		12V / 7Ahx3		12V / 7Ahx8		12V / 7Ahx8
Backup Time (50% load)		12 min		19 min		16 min
Backup Time (Full Load)		5 min		8 min		5 min
Charge Current (Standard unit)	1A					
Charge Current (Long run unit)	6A		6A		6A	
Typical recharge time	8 hours (to 90% of full capacity)					
SYSTEM FEATURES						
LCD Indication	1). Input voltage / frequency, battery voltage, output voltage / frequency, load watt/VA and percent, inverter temperature. 2). Operation mode such as "online", "on batt", or "on bypass"					
LED Indication	1). Green LED for normal operation 2). Yellow LED for warning condition 3). Red LED for abnormal operation 4). Amber LED for normal battery mode					
Overload Capability	1). >110%, 30s turn to bypass mode; 2). >150%, 300ms turn to bypass mode					
Transfer Time	Between AC Mode and Battery Mode - 0 ms Between AC Mode and Bypass Mode : 4ms (typical value 2.5ms)					
Communication Interface	RS232; SNMP (Optional)					
ENVIRONMENTAL						
Operating Temperature	0 ~ 40°C					
Storage Temperature	-25 ~ 55°C					
Humidity Range	0% ~ 95% (non-condensing)					
Altitude	<1500m					
Noise Level	<45dB					
PHYSICAL						
Dimension W x D x H (mm)	144 x 421 x 215		191 x 478 x 339		191 x 478 x 339	
Packing W x D x H (mm)	258 x 524 x 334		332 x 603 x 482		332 x 603 x 482	
Net / Shipping Weight (kg) (Standard unit)	14 / 16		33 / 35		34 / 36	
Net / Shipping Weight (kg) (Long run unit)	7.5 / 9		14 / 16		15 / 17	
STANDARDS						
Safety	IEC / EN62040-1; IEC/En60950-1					
EMC	IEC/EN62040-2; IEC61000-4-2; IEC61000-4-3; IEC61000-4-4; IEC61000-4-5; IEC61000-4-5; IEC61000-4-8					

Specifications are subject to change without prior notice.

ALPHA POWER CONTROLS

No.2/439, Thirumal Nagar, Athur Privu, Erode Road, Karur - 639 002

E-mail : alphapowercontrols.in@gmail.com

Website : www.alphapowercontrols.in

Branches: Chennai | Coimbatore | Madurai | Trichy | Karur | Erode | Salem | Hosur | Tiruppur

Scan the QR Code
to Visit our Website



Every Critical Application Needs a Reliable Backup Partner

ON-LINE UPS



ALPHA POWER CONTROLS

- # 2/439, Thirumal Nagar, Athur Privi, Erode Road, Karur - 639 002.
- alphapowercontrols.in@gmail.com
- www.alphapowercontrols.in

MASTER SERIES

10 ~ 30KVA
3:1 Phase PF : 0.8



► CONTROL PANEL



Features

High reliability design

- Double Conversion on-line design, which make the output a pure sine wave source with tracking frequency, phase-lock- and voltage regulation, low distortion and without power fluctuation interference, providing the load with more comprehensive protection.

Strong protection for load

- Built-in isolation transformer, strong anti-interference ability, provides more comprehensive protection.

Wide input range

- Wide input voltage range up to "304~456VAC, avoid frequently switching to battery mode, which adapt to the areas with harsh environment.
- Wide input frequency range, ensure all types of fuel generators connected work stable.

Optimization of high-performance battery

- Adapt intelligent battery management(ABM) technology, thus extending battery life and reducing battery maintenance times.
- Advanced floating switching and charging technology maximize the activation of the battery, thus saves the charging time and extends the battery life.

Battery cold start function

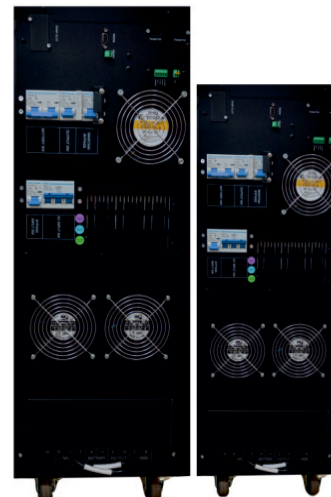
- The UPS can be start directly by battery group when no utility access in, which meets the emergent needs of user.
- Strong cold start ability, which can do the cold start operation when full load.

User-friendly network management

- Communication with computer can be realized by RS232 with corresponding monitoring software. The various parameters can be shown on the communication interface.
- External SNMP adapter. The UPS with remote network management capability can provide real-time data for communication and management through a variety of network management systems.

Comprehensive and reliable protection

- Self-diagnosis function before start-up, avoid the risks that the failure may lead to.
- The multi-protection such as overload, short-circuit, over-temperature, battery under voltage, battery over-charge and so on greatly ensure the system stability and reliability.



► REAR PANEL

- RS232 port
- Input breaker
- FAN
- Connection Box
- Entrance Hole
- Active wheel

Technical Specifications :

MODEL	M 10		M 15		M 20		M 30	
Capacity (KVA / KW)	10 / 8		15 / 12		20 / 16		30 / 24	
INPUT								
Operating voltage range	380Vac(±20%), (3Ph+N+PE)							
Operating frequency range	50/60Hz (±5%)							
Power factor	>0.97 (with filter)							
Max. input current(A)	14	18	23	34	45	68	90	
OUTPUT								
Output voltage	220Vac(±0.5%) / 230Vac(±0.5%)							
Output frequency	50/60Hz(±0.5%)							
Crest factor	3:1 (max)							
Efficiency	> 92% online							
Harmonic distortion (THD)	<1.5% (Linear Load)							
Power Factor	0.8 (0.9 Optional)							
BATTERY								
Battery Voltage	192 VDC						240 VDC	
Battery Types	SMF VRLA / TUBULAR							
SYSTEM FEATURES								
Transfer Time	0 ms (Line mode ↔ Battery mode)							
Overload	>125% : 1min, >150%: 200ms							
LED display	Battery low, Mains status, Inverter, Bypass, UPS failure, Overload							
LCD display	I/O voltage, frequency, Battery voltage, Load percentage, Internal temperature							
Communication interface	RS232, SNMP (optional), Dry contact (optional)							
ENVIRONMENTAL								
Operating temperature	0 ~ 40°C							
Storage temperature	-25°C ~ 55°C							
Humidity range	0 ~ 95% (non-condensing)							
Altitude	<1500m							
Noise level	<55dB							
PHYSICAL								
Dimension W x D x H (mm)	305 x 585 x 864		409 x 798 x 1044			430 X 830 X 1100		
Net weight (kg)	120	138	145	155	255	255		
STANDARDS								
Safety	IEC/EN62040-1;IEC/EN62477-1							
EMC	IEC/EN62040-2;IEC61000-4-2;IEC61000-4-3;IEC61000-4-4;IEC61000-4-5;IEC61000-4-6;IEC61000-4-8							

Specifications are subject to change without prior notice.

ALPHA POWER CONTROLS

No.2/439, Thirumal Nagar, Athur Privu, Erode Road, Karur - 639 002

E-mail : alphapowercontrols.in@gmail.com

Website : www.alphapowercontrols.in

Branches: Chennai | Coimbatore | Madurai | Trichy | Karur | Erode | Salem | Hosur | Tiruppur

Scan the QR Code
to Visit our Website

